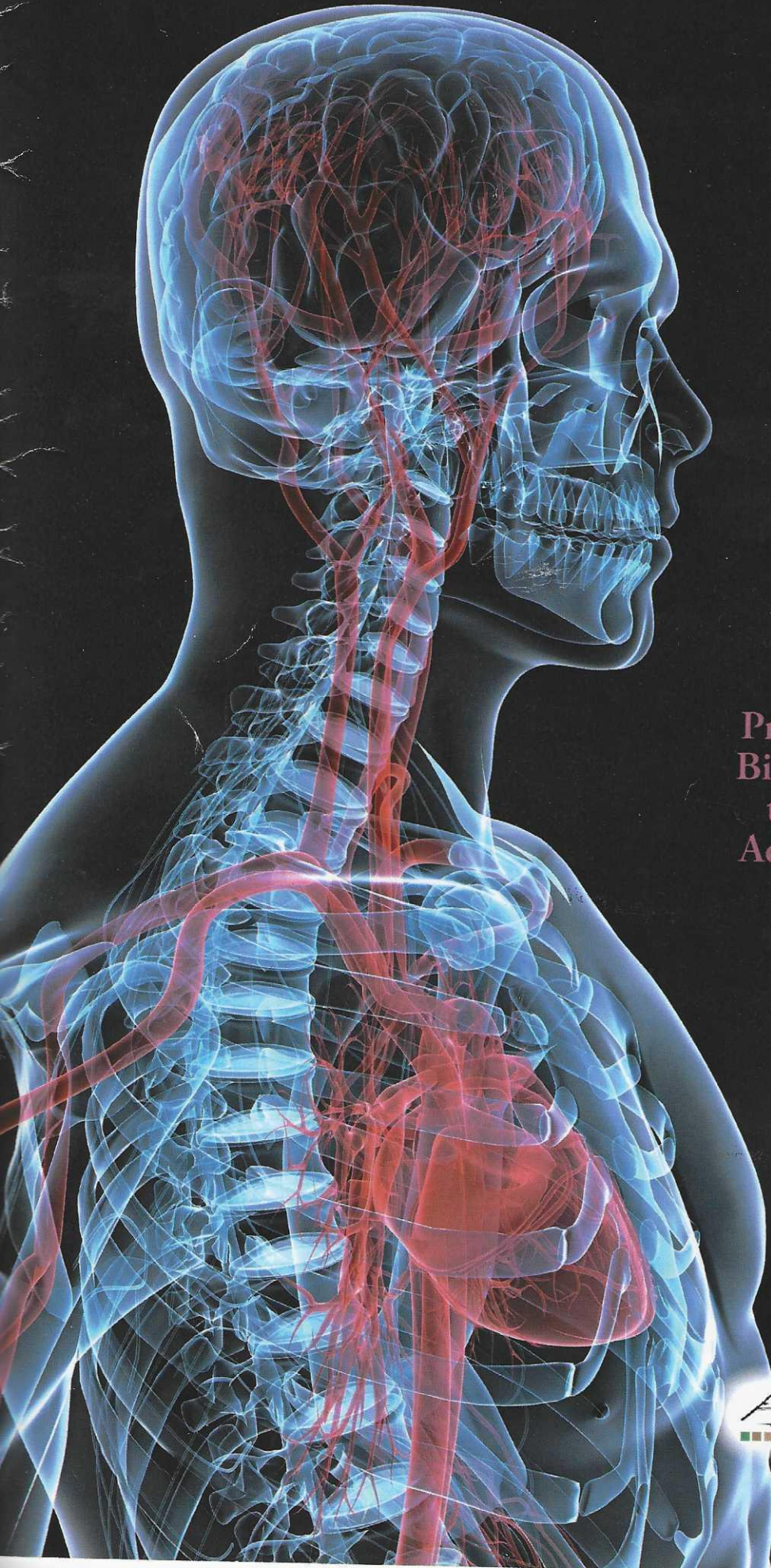


Prospectus 2012

Training in the
Practical Application of
Bioresonance According
to Paul Schmidt and
Additional Information



Diploma in Bioresonance Medicine

1 Year Course commencing Monday January 14th, 2012

This course is offered through The Academy for Bioregulatory Medicine in London, and provides medical education for the increasing incidence of predominantly chronic, degenerative and malignant diseases, as well as the preventative measures to be advised. A team of doctors and practitioners conduct lectures on the bioregulatory principles of human electrophysiology and biophysics, and bioresonance according to Paul Schmidt. The syllabus draws on more than one hundred years of scientific research into bioenergy and bioresonance in its clinical application, with four core modules at the London location, and specific practical lessons in bioresonance at Health Leads UK.

The course provides training through lectures, practical demonstrations, self-study and work assignments, and students will be able to practice Bioresonance Medicine and prescribe therapies in a manner which is: ethical; safe; effective; best practice; and provides knowledge of diagnostics to ensure referral where necessary. You will learn the advantages of Bioresonance Medicine:

- Gentle treatment without side effects or complications;
- Rebalance of human electrophysiology by treating causative factors of disease;
- Treatment at the bioenergetic level of biological function;
- Halt the disease process at the formative stages of its progression;
- Substantially diminish or avoid any need for aggressive treatment.

On successful completion you will be awarded a Diploma in Bioresonance Medicine (DipBM) leading to membership of the British Register of Complementary Practitioners (MBRCP) and Society for Bioregulatory Medicine (MSBM).

Applications for the course are invited from complementary practitioners with several years' working in health care, medical doctors, dentists, psychotherapists, psychologists and practitioners interested in the principles and practice of integrated medicine and bioresonance therapy. We hope that you will be one of those pioneers who will join us on this exciting and important journey toward an innovative approach to health.

Course Structure & Dates

The Diploma in Bioresonance Medicine is based on completing seven modules and total of 60 credits, or 600 hours of lectures and study (each credit represents 10 hours).

Course attendance	16 hours
Home study	40 hours
Assignment	20 hours
Personal and professional integration	10 hours
Final assessment	4 hours
TOTAL per module	86 hours

Seven modules are run throughout one year with a final exam. Four modules are run from London and three practical modules at the Health Leads UK training centre in Wales.

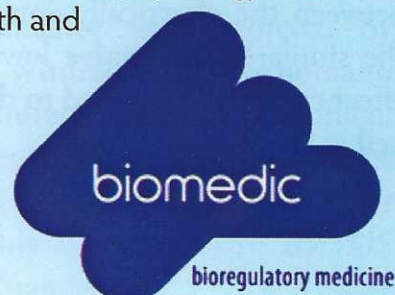
Module 1 January 14th – March 16th 2012

To expand medical pathophysiology to the scientific basis of homeostasis and system theory.

To understand process oriented disease progression and the system approach of etiopathogenesis in a context of homeostatic feedback.

Understanding of the bioenergetic and bioresonant aspect of electrophysiology and it's influence on health and disease.

To apply in a clinical setting the foundation level of bioresonance medical protocols.



Module 2 March 17th – May 11th 2012

To observe detoxifying and eliminative protocols for the bioregulatory medical approach.

To understand electromagnetic and geopathic pollution and its inference to disease.

Understanding of the bioresonant aspect of the electrophysiology and it's influence on health and disease.

To apply bioresonant and bioregulatory protocols in the inflammatory stage of disease.

Module 3 May 12th – June 8th 2012

(May 12th & 13th at Health Leads UK)

To receive training and manuals for specific bioresonance equipment.

To become proficient in diagnosis and treatment through practical application of bioresonance.

Understand and apply bioresonance procedures within the overall medical treatment.

To develop patient/therapist communication and the creation of advanced protocols.

Module 4 June 30th – September 21st 2012

To observe the nature of degenerative disease diagnosis and treatment.

To understand the holistic view of the degenerative phase of the disease process and devise bioresonance medical protocols.

To understand PNEI and apply these protocols in bioregulatory treatment.

To apply a multi-level approach to physiological and electromagnetic body processes.



Module 5 Sep 21st - Nov 16th 2012

(September 15th & 16th at Health Leads UK)

As for Module 3

Module 6 Nov 16th - Jan 21st 2013

(October 20th & 21st at Health Leads UK)

As for Module 3

Module 7

Revision period until January 22nd 2013

To observe anti-malignant bioregulatory protocols and bioresonance medicine.

To understand the mechanism of tumour formation and to explore preventative measures.

Obstetrics and newborn phase of health and disease.

To apply bioresonant medical protocol integration in a variety of conditions.

Applications are now being invited for the January 2012 Course. Successful applicants will be informed in writing about the venues and precourse reading. To apply for the course, please fill in the application form available from the Biomedic Centre website or in the last page of their Prospectus and send it to the following address with your curriculum vitae, application form and fee. Any payment will be fully reimbursed for unsuccessful applicants.

Please forward your application to:

British Academy for Bioregulatory Medicine

Biomedic Centre, 23 Manchester Street

London, W1U 4DJ, United Kingdom

Tel: 020 7935 6866

www.biomedic.co.uk

email: inquiry@biomedic.co.uk